



Saint Sharbel Maronite Catholic Church

Saint Sharbel, Pray for Us!

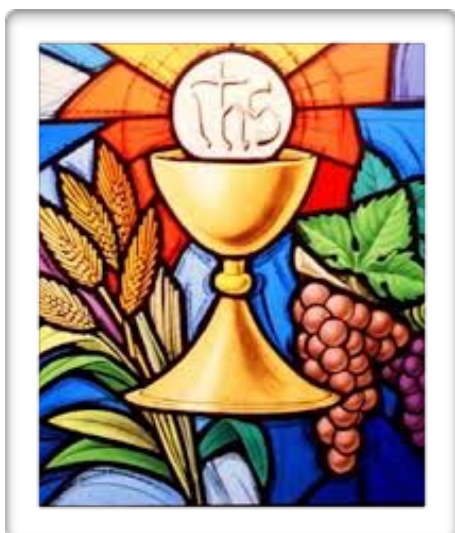
1804 SE 16th Ave., Portland, OR 97214

503.231.3853

stsharbelpdx@gmail.com

www.stsharbel.org

August 26, 2018 15th Sunday of Pentecost



Next Sunday

Prayer; The Fruit of the Word

Rom 8:18-27 (Destiny of Glory)

Lk 18:9-14 (The Parable of the Pharisee and the Tax Collector)

Your Gifts To God

Offering Report for August 12th -18th

Online.....\$465.00

Collection.....\$1,637.19

Weekly Total.....\$2,102.19

YTD Total.....\$57,515.07

YTD Goal.....\$60,954.00

YTD Difference.....**-\$3,438.93**

Liturgy Intentions

Sunday, August 26th, 10:30 am

Available

Monday, August 27th

Available

Tuesday, August 28th

Available

Wednesday, August 29th

Available

Thursday, August 30th

Available

Friday, August 31st

Available

Saturday, September 1st

Available

Sunday, September 2nd

Available

Adoration/Exposition every Sunday at 9:30 am before the morning Liturgy.

Confession every Sunday at 9:45 am before the morning Liturgy.

Also join us to pray the Rosary on Sundays at 10:00 am before the Liturgy begins.

Altar Sponsorship

Sunday, August 26th

Available

Sunday, September 2nd

Available

Parish & Community Events

Parish Council

+Bruce Ashford
(Treasurer)

Charlie Ashou

Gus Bekahi

Nick El Hajj

Agopos Ghossein

Adib Karam

+Claude Karam

Anne Marentette
(Secretary)

Doug Raab

+Thaddeus Rask

Nadia Redmond

Mitch Siekmann

Laif Waldron

Ex Officio
+Deacon Tony
+Deacon Wadih

+Finance Committee

NFP Class Series

When: September 4th, 18th and October 4th from 7-9pm

Where: Northwest Family Services, 6200 SE King Rd.,
Portland, OR 97222

Contact: Lauren Fuller- lfuller@nwfs.org

Northwest Family Services is pleased to offer their Fall 2018 series for learning Natural Family Planning through their SymptoPro Fertility Education program. The Sympto-Thermal method of NFP is scientifically based and can be up to 99% effective when learned and applied under the guidance of an instructor. NFP can be used to avoid pregnancy, achieve pregnancy, or to understand cycle health! One-time class fee of \$110 includes 6 months of comprehensive support. To

Reflection

Jn 6:50-69

We need the gifts of 'spirit and life' else we will be like those disciples who no longer went about with Jesus. He was there in front of them but they could not recognize who he really was. We must not think that only some people are given the gift of faith: no, the Spirit is poured out on everyone, and Jesus' abiding desire is give everyone life to the full.

The words of Jesus causes a split among his followers and some ceased to follow him but it provoked a great act of faith from Peter "Lord, to whom can we go? You have the words of eternal life"; which is comparable to the profession of Martha "Yes, Lord, I believe that you are the Messiah, the Son of God" (John 11:27).

To follow Jesus is to walk forward in faith, understanding that other would-be bearers of truth can never satisfy us. It is to say, whatever happens, "You have the words of eternal life".

Just when Jesus had fully revealed Himself, when he was at his most vulnerable, people walked away. Can you step into Him and reveal what that must be like, that as soon as you reveal who you really are people can't take you and walk away.

Jesus turns to those closest to him, is he in trepidation at being rejected by all? "Do you also wish to go away?" It must have been hugely relieving and confirming to hear the response "Lord, to whom can we go? You have the words of eternal life."

On what grounds do people walk away from Jesus today? How much is He and His message distorted by a flawed Church? To what extent have you walked away from Jesus and what makes you draw near to Him?

Jesus, seeking to lead his hearers beyond dependence on earthly bread, finds himself misunderstood by many of those who had been disciples. They turn back. Am I ever confounded or scandalized by his words? Do I ever turn back?

Peter may not understand the full import of what Jesus is saying but he knows what is essential: 'You have the words of eternal life'. To follow Jesus is to walk forward in faith, understanding that other would-be bearers of truth can never satisfy us. It is to say, whatever happens, 'You have the words of eternal life'.



Gibran N Zogbi
Agent

2925 SE 73rd Avenue
Hillsboro, OR, 97213
Bus 503-649-9514 Fax 503-649-1612
gibran.zogbi.qdmq@statefarm.com



Providing Insurance and Financial Services

Karam Lebanese Deli & Catering

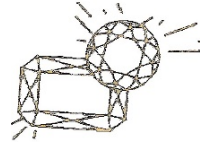
30 Years in Business



2800 SW Cedar Hills
Beaverton, OR 97005
Deli: (503)626-5272
www.karamldc.com



Home Made French & Lebanese Pastry



Diamond Wholesaler

NORTHWEST DIAMONDS & JEWELRY

Wady Kaldawi
(503) 222-5571
(503) 222-1344 FAX

534 SW 3rd # 216
Portland, OR 97204
wady@northwestdiamond.com

Sales - Service
Maintenance
Supplies

Gus & Eva Bekahi

Bill Morrison

Printers, Fax Machines, Copiers, Typewriters

12227 SE Stark St
Portland, OR 97233

(503) 255-1617
FAX (503) 255-1626

Oreste RESIDENTIAL CONSTRUCTION
CONTEMPORARY & TRADITIONAL HOMES

Darin Oreste
503.705.6609 • darin3100@aol.com
849 SW Troy St. Portland, OR 97219
CCB# 114416 "Where detail makes the difference"

Want to Advertise Your Business?

Contact **Nisreen Mouammar** to set up
your advertisement today!

nisreen.mouammar@gmail.com